

# MOHAWK

## PARALLELOGRAM

### 50-26-F FLUSH MOUNT INSTALLATION REQUIREMENT DRAWINGS

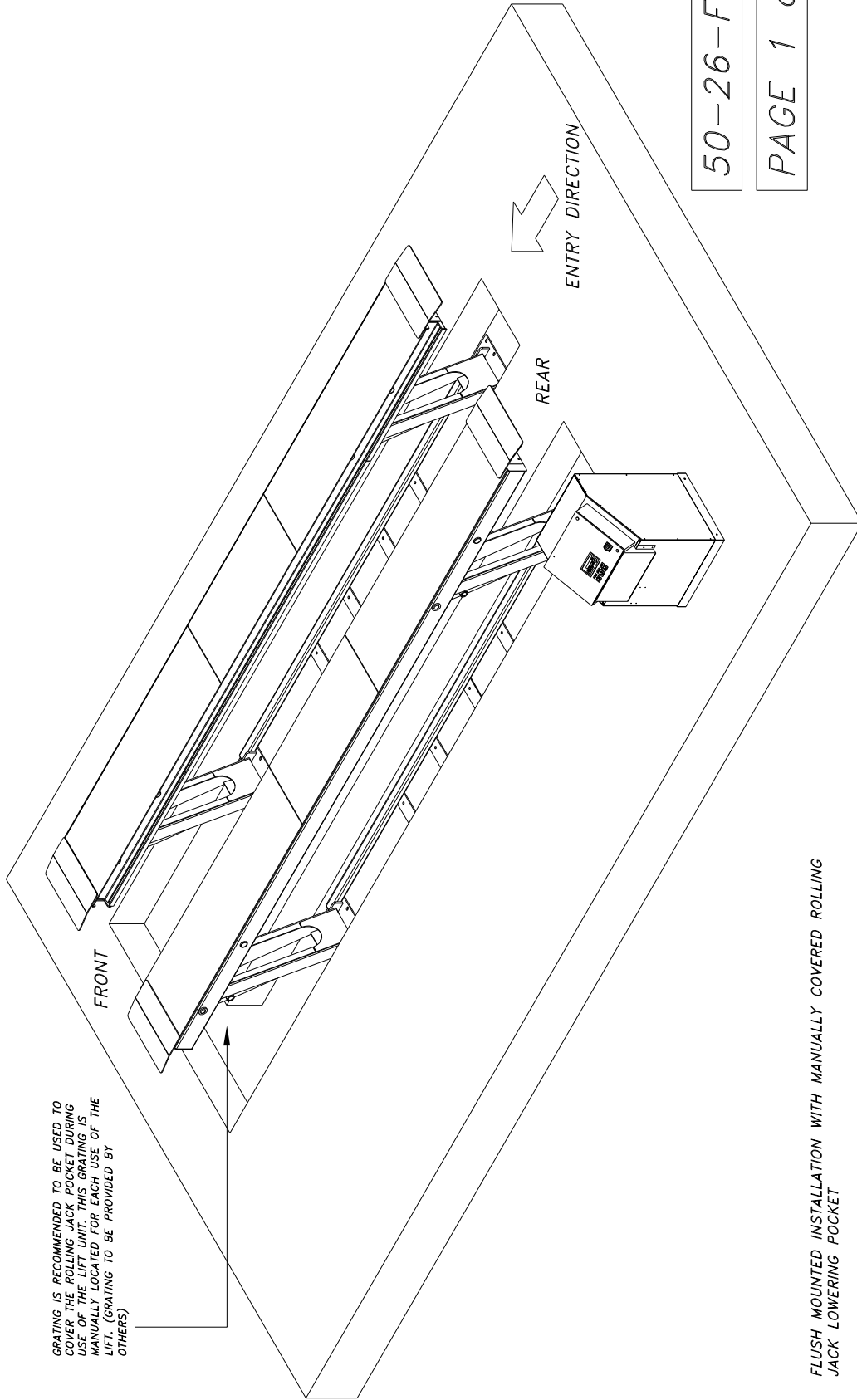


## MOHAWK RESOURCES LTD.

65 VROOMAN AVE.  
AMSTERDAM, NY 12010  
**TOLL FREE:** 1-800-833-2006  
**LOCAL:** 1-518-842-1431  
**FAX:** 1-518-842-1289

**INTERNET:** [WWW.MOHAWKLIFTS.COM](http://WWW.MOHAWKLIFTS.COM)  
**E-MAIL:** [SERVICE@MOHAWKLIFTS.COM](mailto:SERVICE@MOHAWKLIFTS.COM)

GRATING IS RECOMMENDED TO BE USED TO COVER THE ROLLING JACK POCKET DURING USE OF THE LIFT UNIT. THIS GRATING IS MANUALLY LOCATED FOR EACH USE OF THE LIFT. (GRATING TO BE PROVIDED BY OTHERS)



50-26-FLUSH

PAGE 1 of 2

FLUSH MOUNTED INSTALLATION WITH MANUALLY COVERED ROLLING JACK LOWERING POCKET

THIS CONFIGURATION IS MOST OFTEN USED FOR FLEET MAINTENANCE APPLICATIONS THAT INVOLVE A MODERATE RATIO OF TIRE, WHEEL OR BRAKE SERVICES.

THE FRONT OF THE LIFT UNIT IS PLACED TO THE FRONT OF THE LIFT TRENCH. FOR THIS INSTALLATION, THE LIFT UNIT WILL TRANSLATE TO THE REAR AS IT ARTICULATES UPWARD. ALLOW APPROXIMATELY 60 INCHES AT THE REAR OF THE LIFT FOR THIS MOTION.

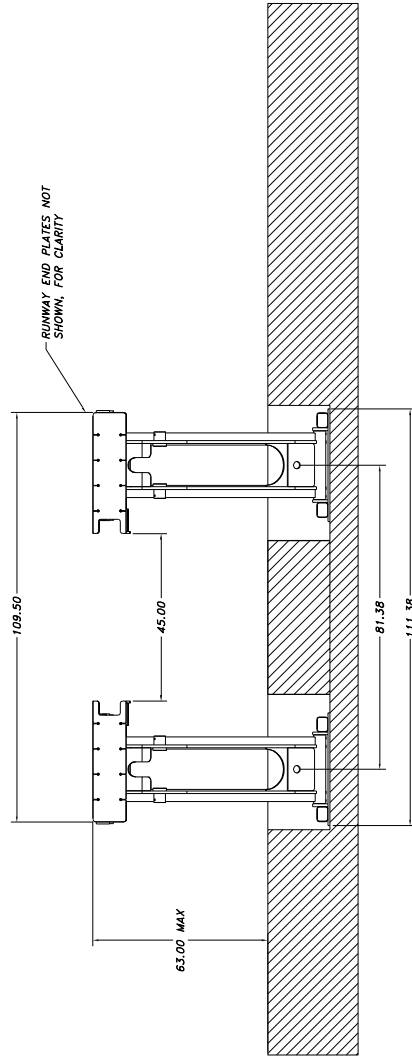
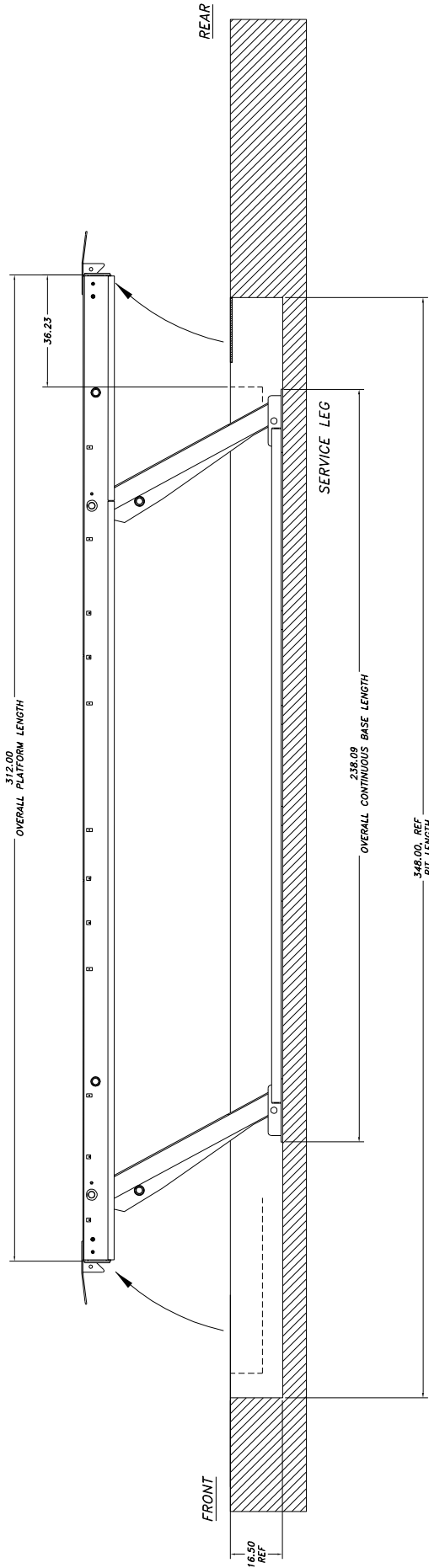
D-size

ITEM	NAME	QTY	DESCRIPTION	MATERIAL	VENDOR	NOTE	MASS	PRICE
6	P-010-D-012	1	Flush Installation General Notes				0.000	0.00
5	P-010-D-011	1	50-26-Flush Lift Data Table				0.000	0.00
4	P-010-D-010	1	50-26-Flush, Pft. Drawings & Sections				0.000	0.00
3	P-010-D-005	1	Service Leg Conduit Details				0.000	0.00
2	P-010-D-004	1	Anchor Details & Shimming				0.000	0.00
1	P-010-D-003	1	Control Console & Sub-Up Details				0.000	0.00

Parts List		SCALE	DRAWN	MOHAWK RESOURCES LTD.
P-010-		1/8	504	INSTALLATION REQUIREMENTS
TOLERANCES:		CHECKED	APPROVED	DRAWING, JOB P-010-4-002
FRACTIONAL ± 0.06		DATE	WEIGHT	FROM
DECIMAL ± 0.03		5/21/03	1.8	
MILS ± 0.05		NEXT ASSEMBLY		
P-010-A-002				

NOTICE OF CONFIDENTIAL INFORMATION  
 INFORMATION CONTAINED HEREIN IS CONFIDENTIAL AND PROPERTY OF MOHAWK RESOURCES LTD. IT IS TO BE USED ONLY FOR THE PURPOSES OF THE PROJECT AND INSTALLATION. IT SHALL BE KEPT SECRET AND NOT BE DISCLOSED TO ANY OTHER PERSONS BY THE RECIPIENT FOR ANY OTHER PURPOSES WHATSOEVER.

NOTES:  
 1. FINISH TO BE 125 RMS.  
 2. UNLESS OTHERWISE SPECIFIED, SURFACE FINISH TO BE 125 RMS.  
 3. SPECIFICATIONS TO C-7000 ELECTROLIFT OR E-7011 CODE S3 FLUX CURB WIRE ONLY.



50-26-FLUSH

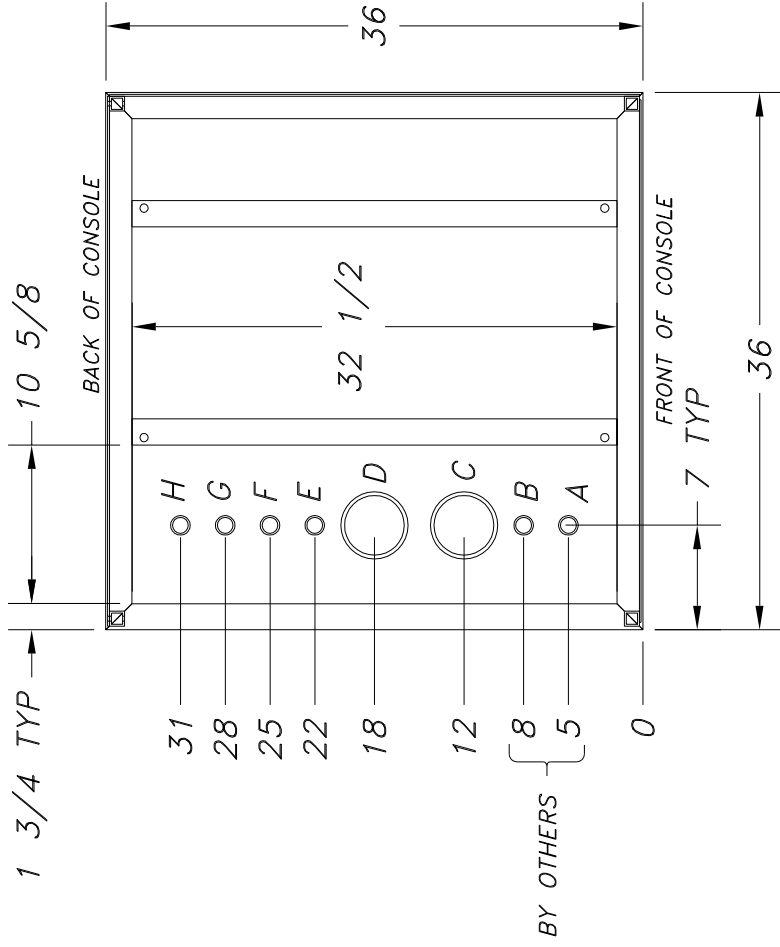
PAGE 2 of 2

NOTICE OF CONFIDENTIAL INFORMATION		P-010-		SCALE	DRAWN	MOHAWK RESOURCES LTD.	
1. REMOVE ALL SHARP CORNERS & EDGES. FINISH TO BE 150 RMS.		P-010-A-002		1/16	PM7099	INSTALLATION REQUIREMENTS	
2. FINISH TO BE 150 RMS.		FILE NAME		CHECKED	APPROVED	TITLE	DRAWING, 50-26-FLUSH
3. WELDING MEDIUM SHALL CONFORM TO AWS E-C011 CODE S.3 FLUX CODE WIRE ONLY.		P-010-A-002		DATE	WEIGHT	FROM	DRAWING NUMBER
IT SHALL BE USED ONLY FOR PURPOSES OF INSPECTION OR VALIDATION OF THE RECEIPT FOR ANY OTHER PURPOSES WHATSOEVER.		NEXT ASSEMBLY		3/23/03			P-010-A-002

FRONT ELEVATION VIEW

D-SIZE

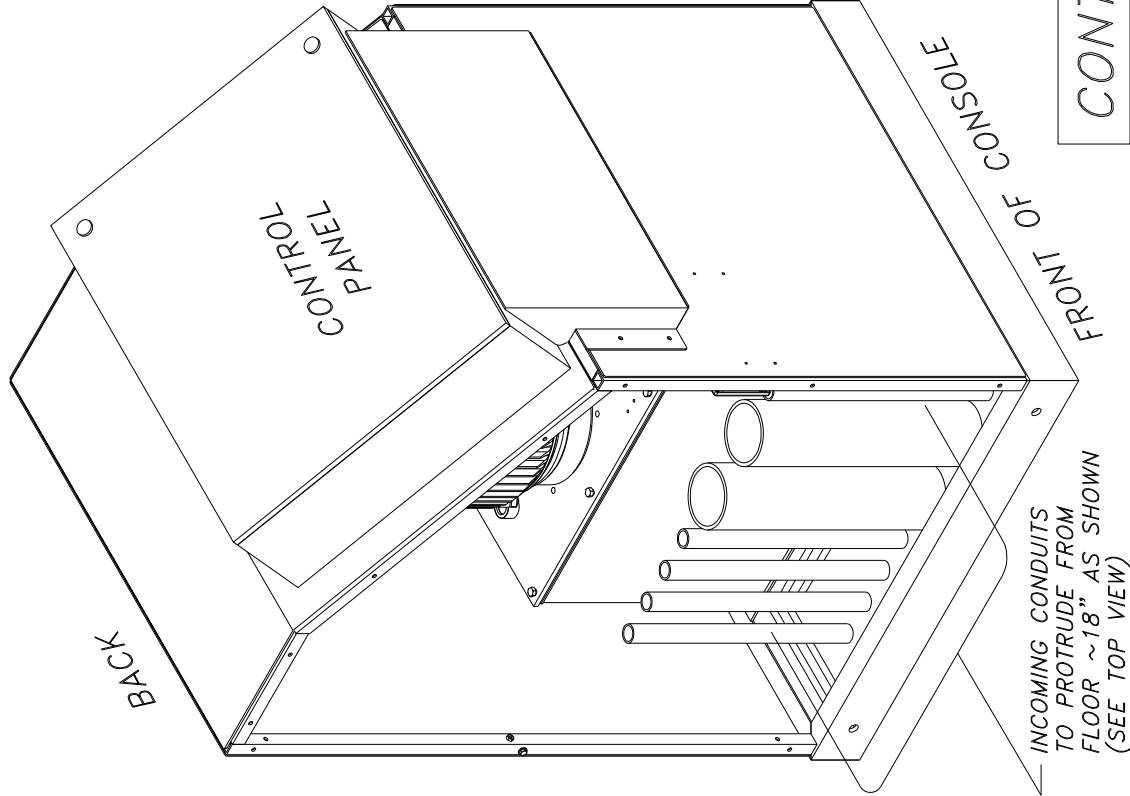
TOP VIEW OF CONSOLE FRAME



CONDUIT SIZES & APPLICATION:

- A: 1" (MIN) SCHED 40 STEEL PIPE - INCOMING POWER
  - B: 1" (MIN) SCHED 40 STEEL PIPE - INCOMING AIRLINE
  - C,D: 4" SCHED 40 PVC PIPE - HYDRAULIC & AIR TO LIFT
  - E,F,G,H: 1" (MIN) SCHED 40 STEEL PIPE - ELECTRICAL TO LIFT
- CUSTOMER PREFERENCE OPTIONAL

\* NOTE: USE SMOOTH ELECTRICAL 90'S IN CONDUITS, NOT PLUMBING 90'S !!



NOTICE OF CONFIDENTIAL INFORMATION

ALL INFORMATION CONTAINED HEREIN IS CONFIDENTIAL AND PROPERTY OF MOHAWK RESOURCES LTD. THESE DRAWINGS ARE TO BE USED ONLY FOR THE PROJECT AND NOT TO BE REPRODUCED, COPIED, OR DISCLOSED TO ANY OTHER PARTY WITHOUT THE WRITTEN APPROVAL OF MOHAWK RESOURCES LTD.

- NOTES:
1. REMOVE ALL SHARP CORNERS & EDGES.
  2. UNLESS OTHERWISE SPECIFIED, SURFACE FINISH SHALL BE AS SHOWN.
  3. WELDING METIUM SHALL CONFORM TO AWS SPECIFICATIONS TO E-70XX ELECTRODES OR E-70XX CORE 55 FLUX CORE WIRE ONLY.

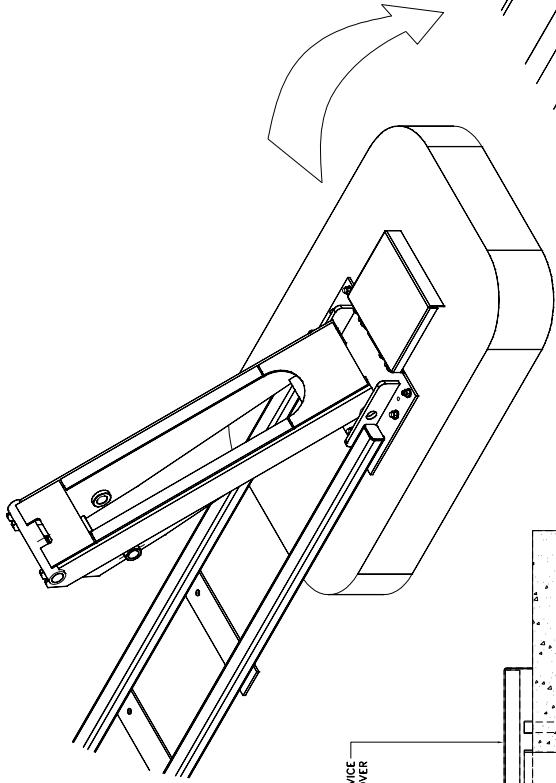
TOLERANCES:	1. 1/32
FINISHES:	1. 1/32
SECTIONAL:	1. 1/32
DR:	1. 1/32
FILE NAME:	P-010-D-003
NEXT ASSEMBLY:	

P-010-H-001	
CHECKED	
DATE	4/03

SCALE	DRAWN	APPROVED	LB
	06K		

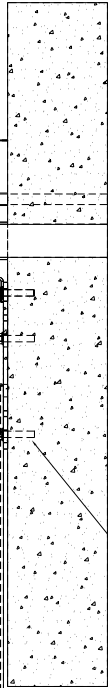
MOHAWK RESOURCES LTD.	
TITLE	CONTROL CONSOLE & STUB-UP DETAILS
FROM	
DRAWING NUMBER	P-010-D-003



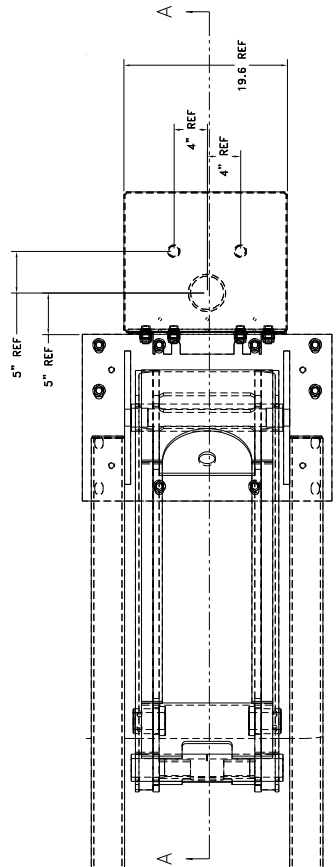


REAR LEG OF LIFT UNIT

FLOOR SERVICE SUPPLY COVER

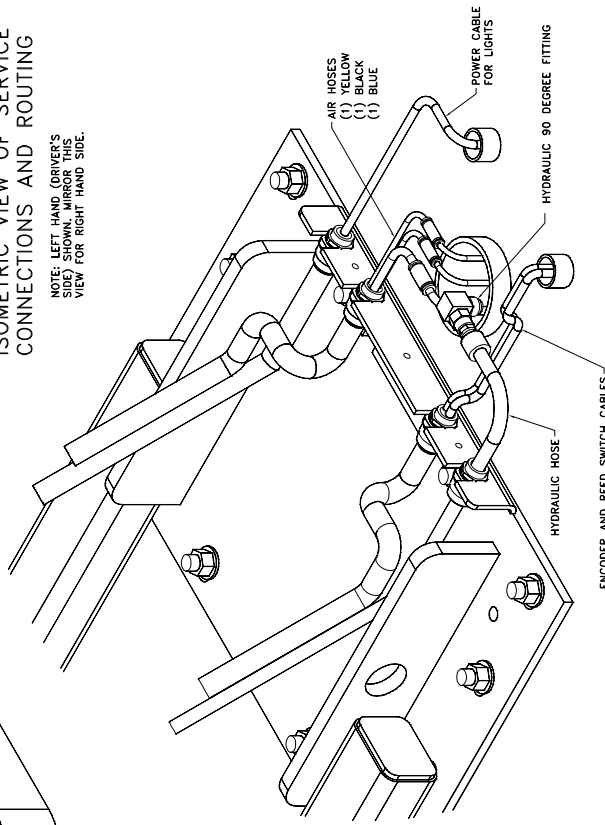


SECTION A-A



ISOMETRIC VIEW OF SERVICE CONNECTIONS AND ROUTING

NOTE: LEFT HAND DRIVER'S VIEW FOR RIGHT HAND SIDE.



ENCODER AND REED SWITCH CABLES

NOTICE OF CONFIDENTIAL INFORMATION  
 INFORMATION CONTAINED HEREIN IS CONFIDENTIAL AND PROPERTY OF MOHAWK RESOURCES LTD. THIS INFORMATION IS TO BE USED ONLY FOR THE PURPOSES SPECIFIED IN THE CONTRACT AND IS NOT TO BE DISCLOSED OR REPRODUCED IN ANY MANNER WITHOUT THE WRITTEN PERMISSION OF MOHAWK RESOURCES LTD.

NOTES:  
 1. REMOVE ALL SHARP CORNERS & EDGES.  
 2. FINISH ALL SURFACES AS SPECIFIED. SURFACE FINISH TO BE PERM. GRK.  
 3. WELDING MEDIA SHALL CONFORM TO AWS SPECIFICATIONS TO E-70XX ELECTRODES OR E-70XX CODE 33 FLOW CORB. WIRE ONLY.

TOLEANCES:  
 ANGULAR ± 1.0  
 DIMENSIONAL ± .010  
 SURFACE ± .015  
 HOLE DIA. ± .015  
 FILE NAME: P-010-D-005

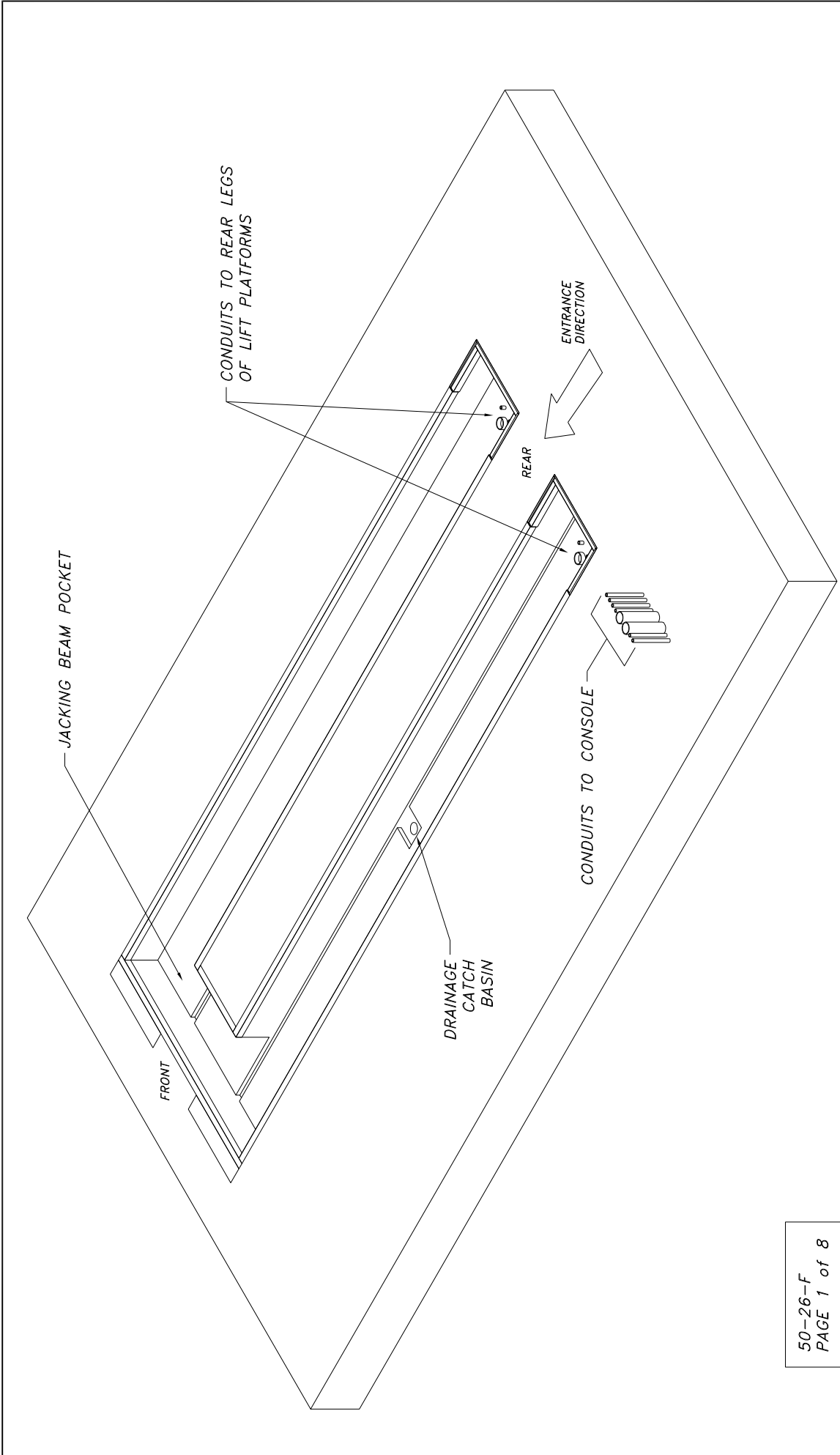
P-010-A-001  
 NEXT ASSEMBLY

SCALE: 1/8  
 CHECKED: r/g  
 DATE: 4/15/03

DRAWN: PM7089  
 APPROVED: r/g

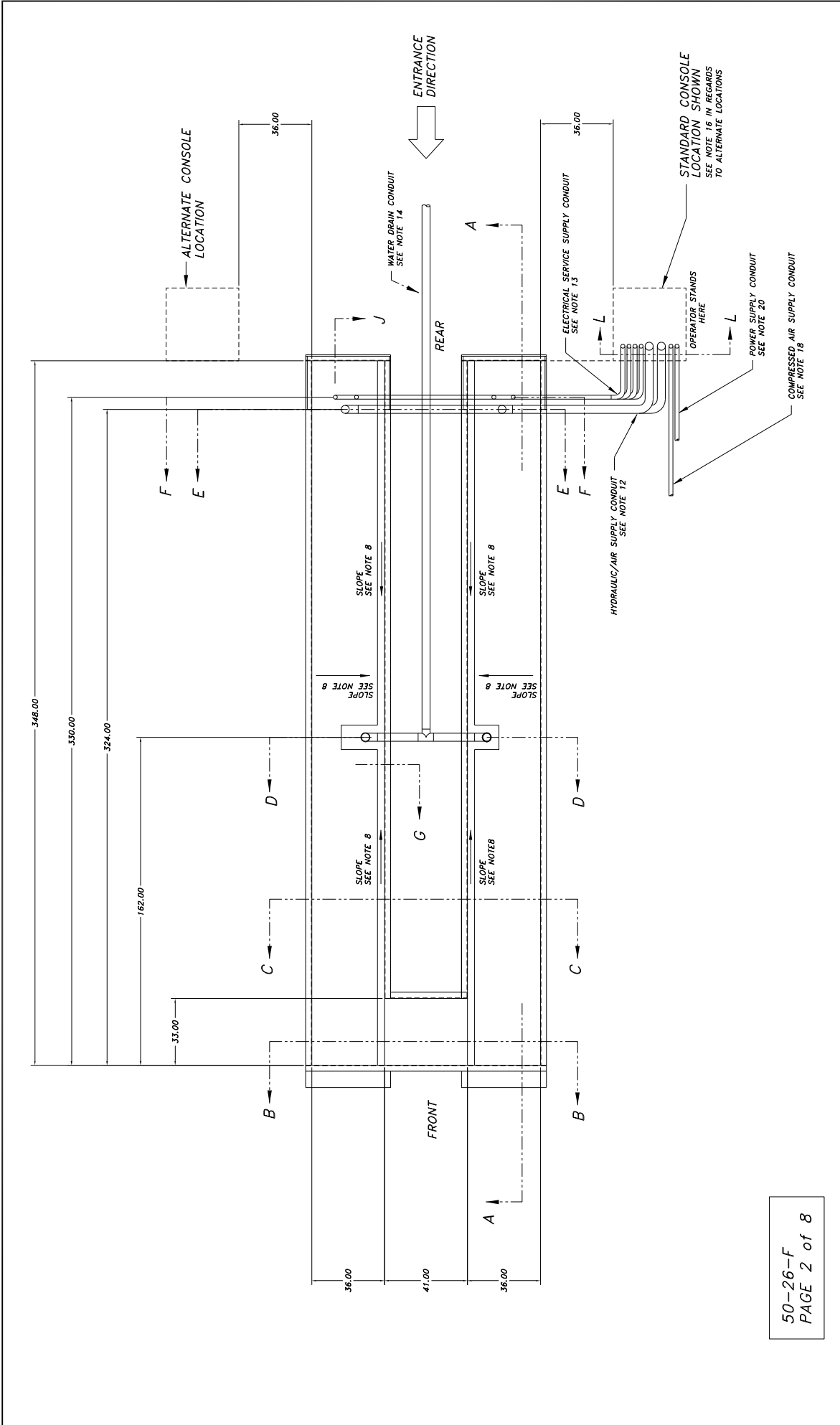
MOHAWK RESOURCES LTD.  
 TITLE: Parallelogram Installation Service Leg Detail  
 DRAWING NUMBER: P-010-D-005

D-SIZE



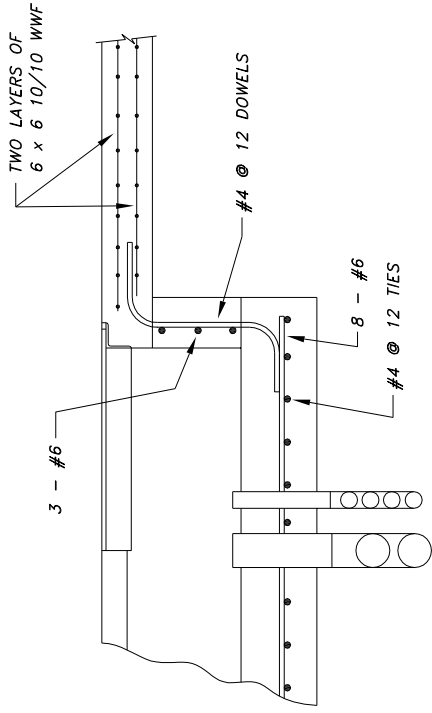
50-26-F  
PAGE 1 of 8

<b>NOTICE OF CONFIDENTIAL INFORMATION</b>		<b>NOTES:</b>		<b>TO FRANCES:</b>		<b>P-010-A-002</b>		<b>SCALE</b>		<b>DATE</b>		<b>MOHAWK RESOURCES LTD.</b>	
<p>1. REMOVE ALL SHARP CORNERS &amp; EDGES.</p> <p>2. UNLESS OTHERWISE SPECIFIED, SURFACE FINISH SHALL CONFORM TO AAS SPECIFICATIONS TO E-70XX ELECTRODES OR E-7011 CODE 5.3 FLUX CORE WIRE ONLY.</p>		<p>1. REMOVE ALL SHARP CORNERS &amp; EDGES.</p> <p>2. UNLESS OTHERWISE SPECIFIED, SURFACE FINISH SHALL CONFORM TO AAS SPECIFICATIONS TO E-70XX ELECTRODES OR E-7011 CODE 5.3 FLUX CORE WIRE ONLY.</p>		<p>ANGULARITY : 1.0</p> <p>DECIMAL : 0.00</p> <p>XXX</p>		<p>APPROVED</p>		<p>CHECKED</p>		<p>5/19/03</p>		<p>FOR 50-26-F (FLUSH)</p>	
<p>REVISIONS SHALL BE INDICATED BY A NUMBERED CIRCLE IN THE MARGINS OF THIS DRAWING. THE INFORMATION SHALL NOT BE USED OR REPRODUCED BY THE RECIPIENT FOR ANY OTHER PURPOSES UNLESS SPECIFICALLY AUTHORIZED BY MOHAWK RESOURCES LTD.</p>		<p>FILE NAME : P-010-D-010</p>		<p>ASSEMBLY</p>		<p>WEIGHT</p>		<p>FROM</p>		<p>LB</p>		<p>P-010-D-010</p>	

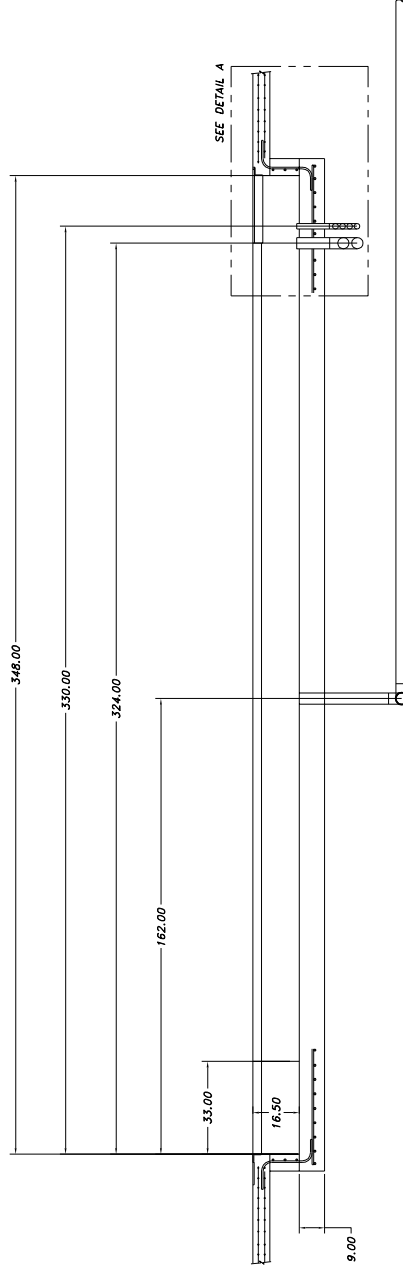


50-26-F  
PAGE 2 of 8

<b>NOTICE OF CONFIDENTIAL INFORMATION</b>		<b>NOTES:</b>		<b>TO FRANCES:</b>		<b>SCALE</b>		<b>DATE</b>		<b>MOHAWK RESOURCES L.T.D.</b>			
INFORMATION CONTAINED HEREIN IS CONFIDENTIAL AND IS THE PROPERTY OF MOHAWK RESOURCES LTD. WHERE ADVISED BY THE RECIPIENT, THE INFORMATION SHALL NOT BE USED OR DISCLOSED BY THE RECIPIENT FOR ANY OTHER PURPOSES WHATSOEVER.		1. REMOVE ALL SHARP CORNERS & EDGES. 2. UNLESS OTHERWISE SPECIFIED, SURFACE FINISH SHALL BE AS SPECIFIED IN THE DRAWING. 3. WELDING MEDIUM SHALL CONFORM TO AWS SPECIFICATIONS TO E-70XX ELECTRODES OR E-7011 CODE 5.3 FLUX CORE WIRE ONLY.		1:0 ANGULAR: 0.00 DECIMAL: 0.00 DIMS: XXXX		3/84 CHECKED		5/19/83 DATE		P-010-A-002 DRAWING NUMBER		P-010-D-010 DRAWING NUMBER	
										FROM L.B.		FROM L.B.	
										NEXT ASSEMBLY		P-010-D-010 DRAWING NUMBER	



DETAIL A



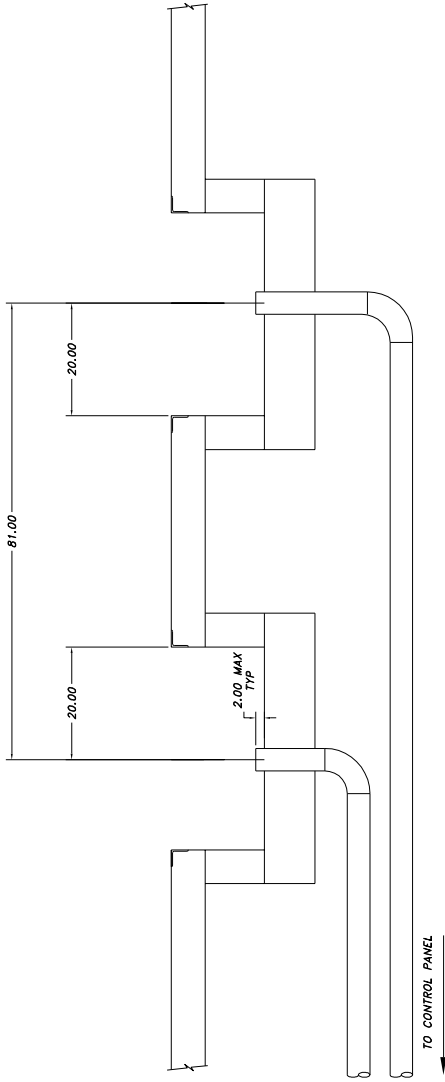
SECTION A-A

50-26-F  
PAGE 3 of 8

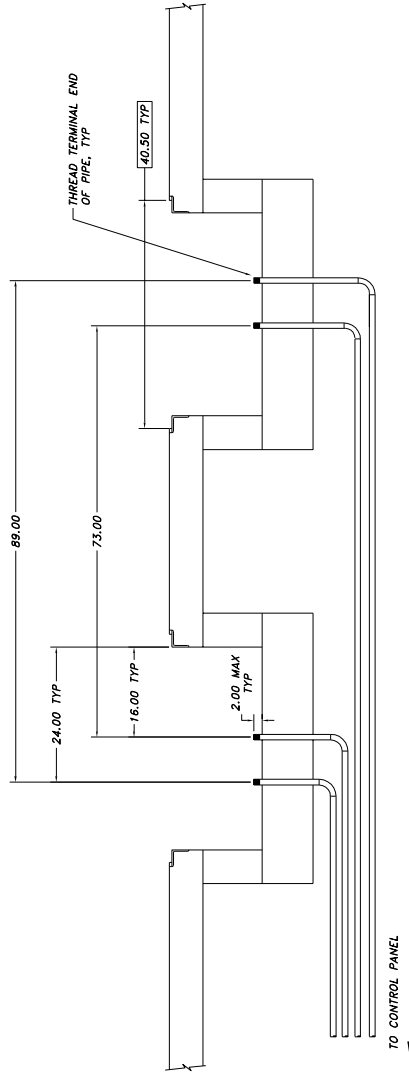
<b>NOTICE OF CONFIDENTIAL INFORMATION</b>		<b>MOHAWK RESOURCES LTD.</b>	
INFORMATION CONTAINED HEREIN IS CONFIDENTIAL AND PROPERTY OF MOHAWK RESOURCES LTD. IT SHALL BE USED SOLELY FOR THE PURPOSES OF INSPECTION, INSTALLATION, MAINTENANCE AND REPAIRS AND SHALL NOT BE REPRODUCED OR DISCLOSED IN ANY MANNER WITHOUT THE WRITTEN PERMISSION OF MOHAWK RESOURCES LTD.		<b>PIT DRAWINGS &amp; SECTIONS</b> FOR 50-26-F (PLUSH)	
<b>NOTES:</b> 1. REMOVE ALL SHARP CORNERS & EDGES. 2. FINISH TO BE SMOOTHED SURFACE. 3. WELDING SHALL CONFORM TO AWS E-3011 CODE S3 FLUX CORE WIRE ONLY.		SCALE: 3/8" = 1'-0" CHECKED: 3/7/84 DATE: 3/19/03	DRAWN: gsk APPROVED: [Signature] WEIGHT: [Blank] LB FROM: [Blank]
TOLERANCES: FINISH: ± 1/32" DIMENSIONS: ± .005" FILE NAME: P-010-D-010		P-010-A-002 NEXT ASSEMBLY: [Blank]	







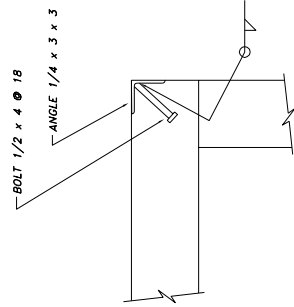
SECTION E-E



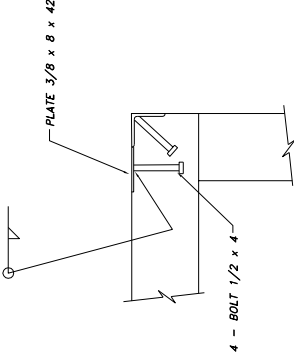
SECTION F-F

50-26-F  
PAGE 6 of 8

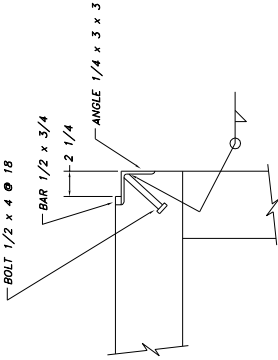
NOTICE OF CONFIDENTIAL INFORMATION INFORMATION CONTAINED HEREIN IS CONFIDENTIAL AND PROPERTY OF MOHAWK RESOURCES LTD. IT IS TO BE USED ONLY FOR THE PURPOSES OF CONTRACT PERFORMANCE. IT IS NOT TO BE DISCLOSED OR REPRODUCED IN ANY MANNER WITHOUT THE WRITTEN PERMISSION OF MOHAWK RESOURCES LTD. BY THE RECIPIENT FOR ANY OTHER PURPOSES WHATSOEVER.	NOTES: 1. UNLESS OTHERWISE SPECIFIED, ALL DIMENSIONS ARE IN MILLIMETERS. 2. UNLESS OTHERWISE SPECIFIED, SURFACE FINISH TO BE 125 RMS. 3. SPECIFICATIONS TO CANADIAN STANDARDS E-7811 CODE S3 FLUX CORE WIRE ONLY.	TOLERANCES: FINISH DIMENSIONAL ± 0.30 HOLE DIMENSIONAL ± 0.08 HOLE POSITIONAL ± 0.30 HOLE DIA. ± 0.05 P.L.S. NOTE: P-010-D-010	P-010-A-002	SCALE 3/32	DRAWN GBR	MOHAWK RESOURCES LTD.
		NEXT ASSEMBLY P-010-D-010	CHECKED	APPROVED	TITLE FOR DRAWINGS & SECTIONS FOR SUPPLY	DATE 5/18/03



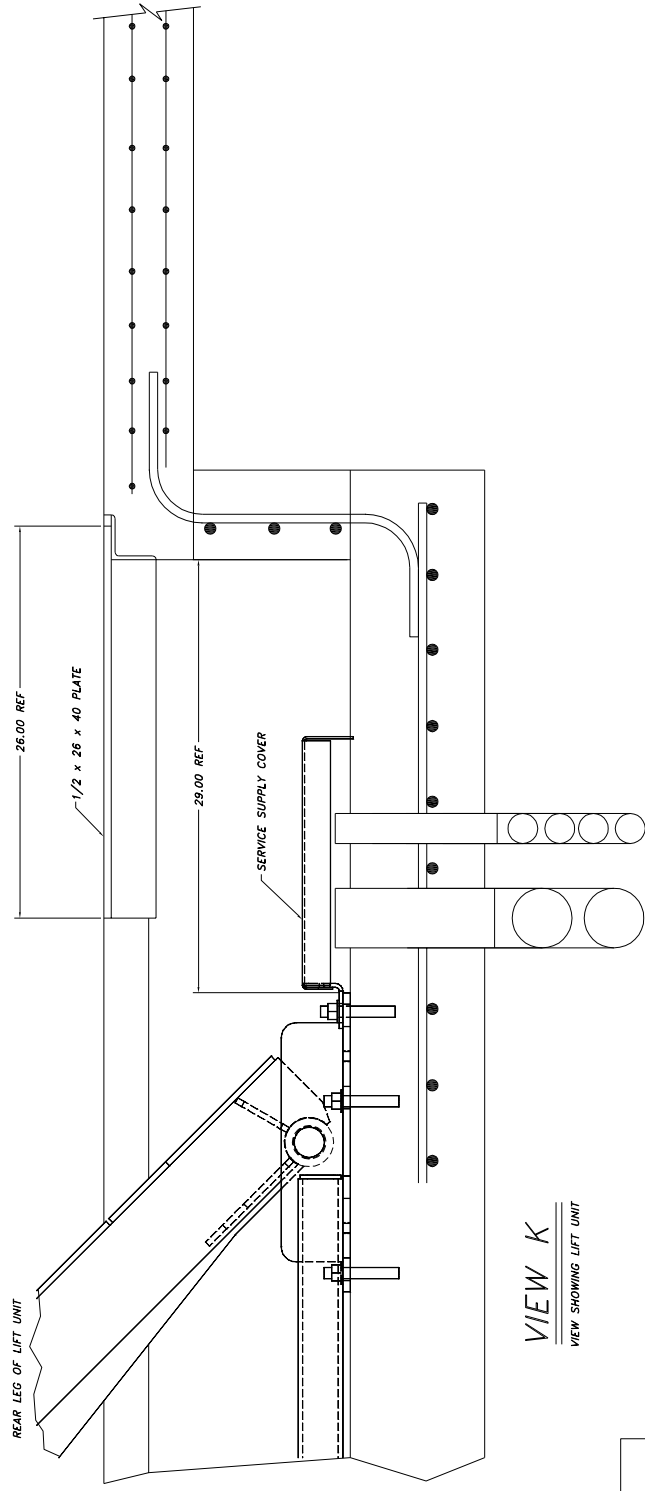
SECTION G



SECTION H



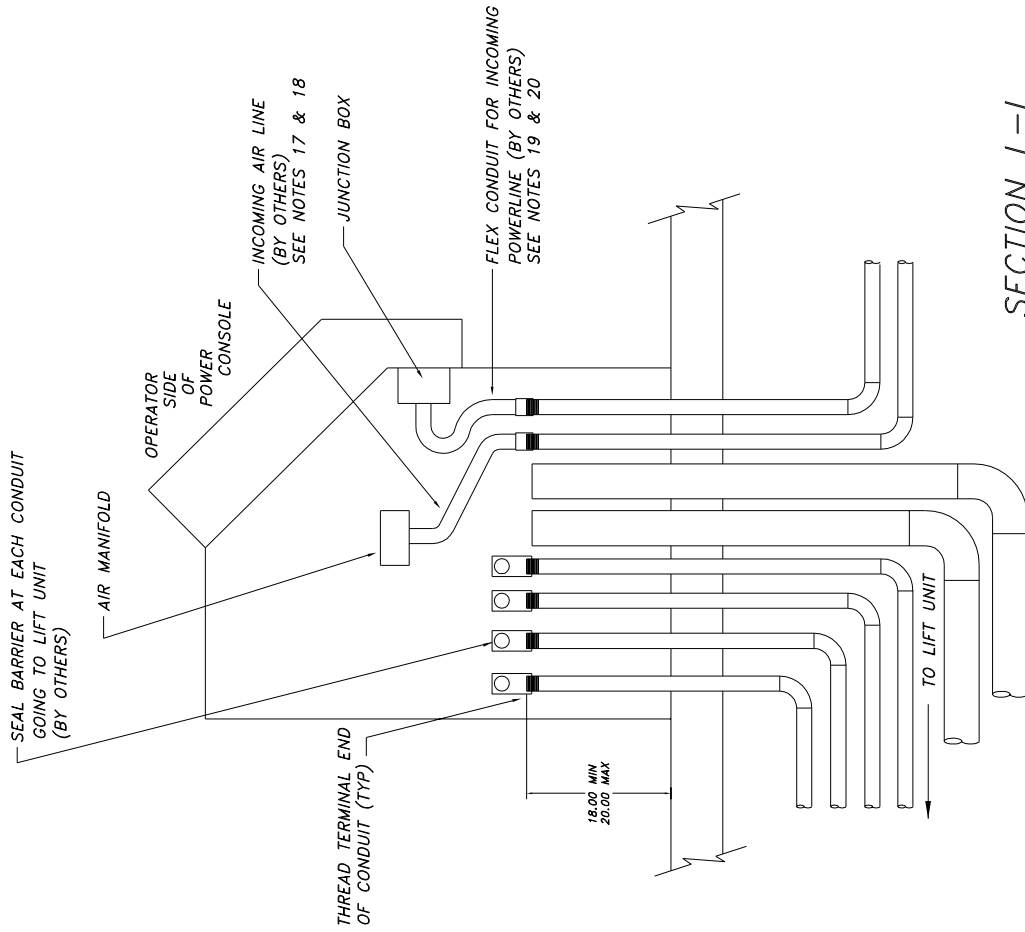
SECTION J



VIEW K  
VIEW SHOWING LIFT UNIT

50-26-F  
PAGE 7 of 8

<p>NOTICE OF CONFIDENTIAL INFORMATION</p> <p>THIS DRAWING IS THE PROPERTY OF MOHAWK RESOURCES LTD. AND IS TO BE USED ONLY FOR THE PROJECT AND FOR THE PURPOSES SPECIFIED. IT IS NOT TO BE REPRODUCED, COPIED, OR TRANSMITTED IN ANY FORM OR BY ANY MEANS, WITHOUT THE WRITTEN PERMISSION OF MOHAWK RESOURCES LTD. BY THE RECIPIENT FOR ANY OTHER PURPOSES WHATSOEVER.</p>		<p>TOLERANCES:</p> <p>1. DIMENSIONS ± .005</p> <p>2. HOLE DIMENSIONS ± .005</p> <p>3. FINISH TO BE 125 RMS UNLESS OTHERWISE SPECIFIED. SURFACE FINISH TO BE 125 RMS UNLESS OTHERWISE SPECIFIED.</p> <p>4. UNLESS OTHERWISE SPECIFIED, SURFACE FINISH TO BE 125 RMS UNLESS OTHERWISE SPECIFIED.</p> <p>5. SPECIFICATIONS TO E-70XX ELECTRODES OR E-70T1 CODE 3.3 FLUX CIRC WIRE ONLY.</p>	<p>FILE NAME</p> <p>P-010-D-010</p>
<p>DATE</p> <p>5/19/03</p>	<p>CHECKED</p> <p>DATE</p> <p>5/19/03</p>	<p>APPROVED</p> <p>DATE</p> <p>5/19/03</p>	<p>DRAWN</p> <p>DATE</p> <p>5/19/03</p>
<p>P-010-A-002</p>		<p>MOHAWK RESOURCES LTD.</p>	
<p>NEXT ASSEMBLY</p>		<p>TITLE</p> <p>REAR LEG OF LIFT UNIT</p>	
<p>WEIGHT</p> <p>L.B.</p>		<p>FROM</p> <p>P-010-D-010</p>	



SECTION L-L

50-26-F  
PAGE 8 of 8

NOTICE OF CONFIDENTIAL INFORMATION		TO FRANCES:	
<p>NOTICE OF CONFIDENTIAL INFORMATION: THIS DRAWING IS THE PROPERTY OF MOHAWK RESOURCES LTD. AND IS NOT TO BE REPRODUCED OR TRANSMITTED IN ANY FORM OR BY ANY MEANS, ELECTRONIC OR MECHANICAL, INCLUDING PHOTOCOPYING, RECORDING, OR BY ANY INFORMATION STORAGE AND RETRIEVAL SYSTEM. THE INFORMATION SHALL NOT BE USED OR DISCLOSED BY THE RECIPIENT FOR ANY OTHER PURPOSES UNLESS SPECIFICALLY AUTHORIZED BY MOHAWK RESOURCES LTD.</p>		<p>1. 1/8" ANGULAR</p> <p>2. 0.030 DECIMAL</p> <p>3. 0.000 XXXX</p>	<p>SCALE: 3/64</p> <p>CHECKED: [ ]</p> <p>DATE: 5/19/03</p>
<p>NOTES:</p> <p>1. REMOVE ALL SHARP CORNERS &amp; EDGES.</p> <p>2. UNLESS OTHERWISE SPECIFIED, SURFACE FINISH SHALL CONFORM TO AAS SPECIFICATIONS TO E-70XX ELECTRODES OR E-7011 COBE 5.3 FLUX COBE WIRE ONLY.</p>		<p>FILE NAME: P-010-D-010</p>	<p>ASSEMBLY: [ ]</p> <p>NEXT: [ ]</p>
<p>MOHAWK RESOURCES LTD.</p> <p>TITLE: PIT DRAWINGS &amp; SECTIONS FOR 50-26-F (FLUSH)</p>		<p>TRAIN: 60K</p> <p>APPROVED: [ ]</p> <p>WEIGHT: [ ]</p>	<p>DRAWING NUMBER: P-010-D-010</p> <p>FROM: [ ]</p> <p>LB: [ ]</p>



**GENERAL NOTES**

NOTE 1  
CONCRETE USED FOR THE BASE AND THE SIDE WALLS OF EACH TRENCH AND ANY OTHER NEW CONCRETE WHICH IS USED FOR THIS INSTALLATION MAY HAVE A MINIMUM STRENGTH OF  $F'c=2,500$  psi. A STRENGTH OF  $F'c=4,000$  psi IS RECOMMENDED WHERE POSSIBLE.

NOTE 2  
CONCRETE USED FOR THE BASE AND SIDEWALLS OF THE TRENCH AREAS SHALL REACH ITS FULL 28 DAY  $F'c$  STRENGTH BEFORE THE LIFT AND THE ANCHOR BOLTS ARE INSTALLED.

NOTE 3  
CONCRETE REINFORCEMENT SIZES AND REINFORCEMENT SPECIFICATION FOR THE BASE OF EACH TRENCH SHALL BE DETERMINED BY AN ENGINEER OR ARCHITECT (AT THE EXPENSE OF THE PURCHASER) AND SHOULD BE DETERMINED CONSIDERING THE LOCAL SOIL CONDITIONS AND THE APPLIED LOADING. AS A MINIMUM, GRADE 60 REINFORCEMENT OF THE SIZE AND SPACING SHOWN ON THE DRAWINGS SHALL BE USED.

NOTE 4  
CONCRETE REINFORCEMENT SPECIFICATIONS FOR THE FLOOR AREA AROUND THE TRENCHES SHALL BE DETERMINED BY AN ENGINEER OR ARCHITECT (AT THE EXPENSE OF THE PURCHASER) AND SHOULD BE DETERMINED CONSIDERING THE LOCAL SOIL CONDITIONS AND THE APPLIED LOADING. AS A MINIMUM, TWO LAYERS OF GRADE 60, 6x6-10/10 WELDED WIRE FABRIC SHOULD BE USED IN THE VICINITY OF THE LIFT UNIT AND BETWEEN THE TRENCHES.

NOTE 5  
THE REINFORCING STEEL USED IN THE BASE OF THE TRENCHES SHALL BE INSTALLED SO AS TO NOT INTERFERE WITH THE ANCHOR BOLTS USED TO ATTACH THE LIFT UNIT.

NOTE 6  
WELT-IT FASTENING SYSTEMS, AT WEDGE ANCHORS ARE PROVIDED WITH THE LIFT FOR ANCHORING THE LIFT UNIT TO THE FLOOR SYSTEM. THE NUMBER AND THE SIZE OF ANCHOR BOLTS SPECIFIED IN THE DRAWING MUST BE USED TO ATTACH THE LIFT UNIT. ANCHOR BOLTS OF FULL LENGTH MUST BE USED IN ALL LOCATIONS PROVIDED ON THE BASE OF THE LIFT UNIT.

NOTE 7  
CARE MUST BE TAKEN TO ENSURE THAT THE SIDE WALLS OF THE TRENCH ARE PARALLEL AND STRAIGHT. APPROXIMATELY 1 1/2 OF CLEARANCE IS PROVIDED ALONG THE SIDES OF THE RUNWAYS.

NOTE 8  
SLOPE THE BOTTOM OF THE TRENCH 1/16 INCH PER FOOT TOWARD THE DRAINAGE CHANNEL. SLOPE THE DRAINAGE CHANNEL 1/16 INCH PER FOOT TOWARD THE CATCH BASIN.

NOTE 9  
CARE MUST BE TAKEN TO ENSURE THAT THE BASE OF THE TRENCH AREAS ARE AT THE PROPER ELEVATION. A MAXIMUM OF ONE INCH ADJUSTMENT (SHIMMING) IS PERMITTED FOR INSTALLATION LEVELING.

NOTE 10  
WHERE MORE THAN 3/4 INCH OF SHIM LEVELING IS REQUIRED, FULL SUPPORT PLATE CONTACT SHIMS ARE AVAILABLE AT ADDITIONAL COST. THE FULL CONTACT SHIM PLATES SHALL THEN BE ACCURATELY LEVELED USING INDIVIDUAL ANCHOR BOLT SHIMS. INDIVIDUAL ANCHOR BOLT SHIMS ARE AVAILABLE IN A RANGE OF THICKNESSES FROM 1/16 INCH TO 1/4 INCH.

NOTE 11  
NO EMBEDDED PLUMBING, TUBES, CONDUITS OR OTHER ITEMS, EXCEPT THE LIFT UNIT SERVICE LEG CONDUITS SHALL BE CLOSER THAN 16 INCHES FROM ANY ANCHOR BOLT. ALSO, THE SERVICE LEG CONDUITS SHALL BE INSTALLED ACCURATELY IN THE LOCATIONS SHOWN IN THE PLAN AND DETAIL VIEWS TO MINIMIZE THE EFFECT ON THE ANCHORAGE.

NOTE 12  
PROVIDE TWO, 4 INCH SCH 40 PVC PIPE AS A HYDRAULIC-PNEUMATIC SERVICE SUPPLY CONDUIT RUNNING FROM THE POWER UNIT TO EACH SERVICE LEG.

NOTE 13  
PROVIDE 4, 1 INCH SCH 40 STEEL CONDUITS AS ELECTRICAL SERVICE SUPPLY RUNNING FROM THE POWER UNIT TO THE SERVICE LEGS. THESE CONDUITS SHALL BE INSTALLED AS SHOWN ON THE SECTION VIEWS AND MUST BE INSTALLED ACCORDING TO APPLICABLE ELECTRICAL CODES.

NOTE 14  
ONE 4 INCH SCH 40 PVC DRAIN PIPE SHOULD BE PROVIDED TO CARRY DRAINAGE FROM THE CATCH BASINS TO AN OIL-WATER SEPARATOR. THIS PIPE SHOULD SLOPE A MINIMUM OF 1/16 INCH PER FOOT TOWARD THE DESTINATION.

NOTE 15  
PROVIDE TEMPORARY CAPS FOR ALL CONDUITS AND EMBEDDED PIPES. IT IS RECOMMENDED TO LEAVE PULL ROPES IN CONDUITS FOR EASE OF LIFT INSTALLATION.

NOTE 16  
THE CONTROL CONSOLE MUST BE LOCATED IN THE VICINITY OF THE LIFT. IT SHOULD BE PLACED FAR ENOUGH AWAY FROM THE LIFT TO ALLOW FOR ACTIVITIES AROUND THE LIFT. THE ENCLOSED DRAWINGS SHOW THE CONSOLE IN A STANDARD POSITION. THE CONTROL CONSOLE MAY BE LOCATED ON EITHER SIDE AND ANYWHERE ALONG THE LENGTH OF THE LIFT, BUT ANY DEVIATIONS FROM THE ENCLOSED DRAWINGS MAY REQUIRE LONGER CABLES, HOSES, CONDUIT, ETC. AT ADDITIONAL EXPENSE TO THE PURCHASER.

NOTE 17  
THE LIFT UNIT REQUIRES CLEAN DRY COMPRESSED AIR AT THE PRESSURE AND VOLUME SHOWN ON THE LIFT UNIT DATA TABLE. A FILTER/LUBRICATOR/REGULATOR IS SUPPLIED WITH THE LIFT UNIT FOR THE LOCKING SYSTEM ONLY. A FILTER/LUBRICATOR/REGULATOR, AIR DRYER AND SHUTOFF VALVE MUST BE PROVIDED FOR THE LIFT UNIT TO OPERATE THE OPTIONAL ACCESSORIES. THE REQUIRED VOLUME OF AIR SHOWN IN THE LIFT UNIT DATA TABLE RECOGNIZES THAT NOT MORE THAN ONE AUXILIARY AIR CONSUMER WILL BE USED SIMULTANEOUSLY.

NOTE 18  
PROVIDE ONE, 1 INCH SCH 40 RIGID STEEL CONDUIT AS A COMPRESSED AIR SUPPLY. THIS CONDUIT IS SHOWN UNDERGROUND, ALTERNATIVELY IT MAY BE BROUGHT TO THE CONTROL PANEL OVERHEAD DEPENDING ON CUSTOMER PREFERENCE. IF BROUGHT OVERHEAD, PROVIDE FLEX CONDUIT CONNECTING THE TERMINAL END OF THE CONDUIT TO THE CONTROL CONSOLE.

NOTE 19  
THE LIFT UNIT REQUIRES A HIGH VOLTAGE POWER SOURCE. A LOCKOUT/TAGOUT ELECTRICAL DISCONNECT BOX MUST BE PROVIDED FOR THE POWER SOURCE. THE LOCKOUT/TAGOUT DISCONNECT BOX MUST BE INSTALLED ACCORDING TO APPLICABLE ELECTRICAL CODES. THIS ELECTRICAL DISCONNECT IS TO BE PROVIDED BY OTHERS.

NOTE 20  
PROVIDE ONE, 1 INCH SCH 40 RIGID STEEL CONDUIT AS ELECTRICAL SERVICE SUPPLY RUNNING FROM THE BUILDING POWER SOURCE TO THE CONTROL CONSOLE. THIS CONDUIT IS SHOWN UNDERGROUND. ALTERNATIVELY IT MAY BE BROUGHT TO THE CONTROL PANEL OVERHEAD DEPENDING ON CUSTOMER PREFERENCE. PROVIDE A LOCKOUT/TAGOUT ELECTRICAL DISCONNECT BOX WITHIN SIGHT AND AS CLOSE TO THE CONTROL CONSOLE AS IS PRACTICAL. THIS ELECTRICAL SUPPLY CONDUIT AND DISCONNECT BOX MUST BE INSTALLED ACCORDING TO LOCAL ELECTRICAL CODE REQUIREMENTS.

NOTE 21  
ALL FLOOR REQUIREMENTS ARE BASED ON A CONCRETE SLAB THAT IS ON GRADE (SUPPORTED BY SOIL). ANY OTHER TYPE OF INSTALLATION INVOLVING A SLAB NOT ON GRADE (I.E. SLAB SUPPORTED BY PYLONS, SECOND STORY SLAB, ETC.) MUST BE REVIEWED & ANALYZED FOR SUITABILITY BY THE BUILDING ARCHITECT, AT THE EXPENSE OF OTHERS.

**NOTICE OF CONFIDENTIAL INFORMATION**  
THIS DOCUMENT IS THE PROPERTY OF MOHAWK RESOURCES LTD. IT IS TO BE USED ONLY FOR THE PROJECT AND NOT TO BE REPRODUCED, COPIED, OR TRANSMITTED IN ANY FORM OR BY ANY MEANS, ELECTRONIC OR MECHANICAL, INCLUDING PHOTOCOPYING, RECORDING, OR BY ANY INFORMATION STORAGE AND RETRIEVAL SYSTEM. THE USER SHALL BE RESPONSIBLE FOR THE PROTECTION OF THIS INFORMATION FOR ANY OTHER PURPOSES WHATSOEVER.

NOTES:  
1. FINISH TO BE UNLESS OTHERWISE SPECIFIED.  
2. UNLESS OTHERWISE SPECIFIED, SURFACE FINISH TO BE UNLESS OTHERWISE SPECIFIED.  
3. SPECIFICATIONS TO E-70X ELECTRICALS OR E-701 CODE 5.3 FLUX CORE WIRE ONLY.  
FILE NAME: P-010-0-012  
NEXT ASSEMBLY:

SCALE	P-010-A-002	TITLE	FLUSH INSTALLATION
CHECKED		APPROVED	
DATE	5/03	WEIGHT	FROM
		LIB	

DRAWING NO.		MOHAWK RESOURCES LTD.	
P-010-0-012		P-010-0-012	

**FLUSH LIFTS ONLY**